

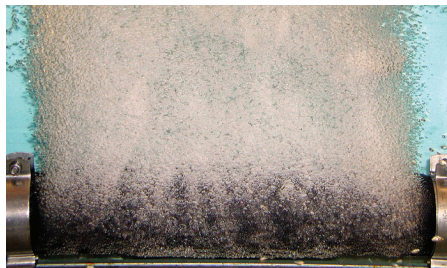


# FLEXAIR™ T-SERIES

Fine Bubble Tube Membrane Diffuser

## Features

- 62 mm and 91 mm diameter tube diffusers with standard length options from 250 mm to 1000 mm
- Choice of PVC or CPVC material diffuser tubes available
- Stainless Steel ¾" male pipe thread or plastic ¾" female pipe thread connections available
- Premium quality membranes available in EPDM, PU, PTFE
- Matrix™ or PTFE-coated, silicone, or other materials
- Triple-check design minimizes entry of liquid/solids into air feed piping
- High-capacity membrane option available for maximum airflow and low operating pressure
- Non-buoyant flo-thru design for reduced uplift





# SPECIFICATION

|          |                                    | Metric             | 91-1003 | 91-762 | 91-502 | 62-1003 | 62-762 | 62-650 | 62-610 |
|----------|------------------------------------|--------------------|---------|--------|--------|---------|--------|--------|--------|
| Micro    | Design Airflow (per membrane)      | m <sup>3</sup> N/h | 0-32    | 0-24   | 0-16   | 0-21    | 0-15   | 0-13   | 0-12   |
|          | Overall Length                     | mm                 | 1003    | 762    | 502    | 1003    | 762    | 650    | 610    |
|          | Active Surface Area (per membrane) | kg                 | 0.245   | 0.183  | 0.116  | 0.159   | 0.118  | 0.099  | 0.092  |
|          | Dry Weight                         | kg                 | 2.4     | 2.0    | 1.4    | 1.8     | 1.5    | 1.4    | 1.4    |
|          | Net Operating Buoyancy             | kg                 | 0.76    | 0.55   | 0.33   | 0.85    | 0.50   | 0.35   | 0.29   |
| High Cap | Design Airflow (per membrane)      | m <sup>3</sup> N/h | 0-35    | 0-26   | 0-18   | 0-23    | 0-17   | 0-14   | 0-13   |
|          | Overall Length                     | mm                 | 1003    | 762    | 502    | 1003    | 762    | 650    | 610    |
|          | Active Surface Area (per membrane) | kg                 | 2.4     | 2.0    | 1.4    | 1.8     | 1.5    | 1.4    | 1.4    |
|          | Dry Weight                         | kg                 | 2.4     | 2.0    | 1.4    | 1.8     | 1.5    | 1.4    | 1.4    |
|          | Net Operating Buoyancy             | kg                 | 0.76    | 0.55   | 0.33   | 0.85    | 0.50   | 0.35   | 0.29   |

|          |                                    | US   | 91-1003 | 91-762 | 91-502 | 62-1003 | 62-762 | 62-650 | 62-610 |
|----------|------------------------------------|------|---------|--------|--------|---------|--------|--------|--------|
| Micro    | Design Airflow (per membrane)      | scfm | 0-20    | 0-15   | 0-9    | 0-13    | 0-10   | 0-8    | 0-7.6  |
|          | Overall Length                     | in   | 39.5    | 30.0   | 19.8   | 39.5    | 30.0   | 25.6   | 24.0   |
|          | Active Surface Area (per membrane) | lb   | 2.64    | 1.97   | 1.25   | 1.71    | 1.27   | 1.07   | 1.00   |
|          | Dry Weight                         | lb   | 5.4     | 4.3    | 3.1    | 3.9     | 3.4    | 3.2    | 3.1    |
|          | Net Operating Buoyancy             | lb   | 1.7     | 1.2    | 0.73   | 1.9     | 1.1    | 0.76   | 0.63   |
| High Cap | Design Airflow (per membrane)      | scfm | 0-35    | 0-26   | 0-18   | 0-23    | 0-17   | 0-14   | 0-13   |
|          | Overall Length                     | in   | 39.5    | 30.0   | 19.8   | 39.5    | 30.0   | 25.6   | 24.0   |
|          | Active Surface Area (per membrane) | lb   | 2.64    | 1.97   | 1.25   | 1.71    | 1.27   | 1.07   | 1.00   |
|          | Dry Weight                         | lb   | 5.4     | 4.3    | 3.1    | 3.9     | 3.4    | 3.2    | 3.1    |
|          | Net Operating Buoyancy             | lb   | 1.7     | 1.2    | 0.73   | 1.9     | 1.1    | 0.76   | 0.63   |